

Unlocking the power of ORCID integrations in HR systems

September 3, 2020



Connecting Research
and Researchers

Gabriela Mejias
Engagement Manager, EMEA
g.mejias@orcid.org
<https://orcid.org/0000-0002-1598-7181>



@gabioshka
@ORCID_Org

What is ORCID?

- ORCID is an open, not-for-profit organization run by and for the research community
- We provide researchers with a unique identifier, an ORCID iD, that reliably and clearly connects them with their research contributions, affiliations, funding & facilities
- We provide open tools (APIs) that enable transparent connections between researchers, and identifiers for their activities & contributions.



OUR COMMUNITY


- 1100+ members from 40+ countries
- 23 consortia
- +900 system integrations: all research sectors
- Over 9M iDs connected to
 - 10M+ affiliations
 - 60M+ works
 - 22M+ unique DOIs



Enter once, reuse often

Instead of manually typing iDs, authentication allows your institution to:



- optimize the processes
- respect user privacy and consent
- avoiding manual entry and typos



Paloma Marín-Arraiza
<https://orcid.org/0000-0001-7460-7794>

(Not You) ?

Europe PubMed Central ?
has asked for the following access to your ORCID Record


 

Read your information with visibility set to Trusted Parties 🔑
Add/update your research activities (works, affiliations, etc)

This application will not be able to see your ORCID password or any other information in your ORCID record with visibility set to Only me. You can manage permission granted to this and other Trusted Organizations in your [account settings](#).

Authorize



Deny



Paloma Marín-Arraiza
<https://orcid.org/0000-0001-7460-7794>

(Not You) ?

TU Wien - TISS ?
has asked for the following access to your ORCID Record

Read your information with visibility set to Trusted Parties 🔑
Add/update your research activities (works, affiliations, etc)
Add/update other information about you (country, keywords, etc.)

This application will not be able to see your ORCID password or any other information in your ORCID record with visibility set to Only me. You can manage permission granted to this and other Trusted Organizations in your [account settings](#).

Authorize

Deny

ORCID APIs

→ Sandbox (Testing)

<https://orcid.org/content/register-client-application-sandbox>

→ Production (Live Registry)

<https://orcid.org/content/register-client-application-production-trusted-party>

Public API Freely available	<ul style="list-style-type: none">•Authenticate: Get a user's authenticated ORCID iD•Read (Public): Search/retrieve public data•Create: Facilitate creation of new ORCID records (via on-demand process)
Member API - Basic Basic membership	<ul style="list-style-type: none">•Read (Limited): Search/retrieve limited-access data•Add: Post new items to a record•Update: Edit or delete items you previously added
Member API - Premium Premium & Consortium membership	<ul style="list-style-type: none">•Webhooks: Receive notifications of updates•Monthly reports (including email stats)•Access to monthly public data file



<https://members.orcid.org/api>

<https://orcid.org/about/membership/comparison>

Affiliations in the Registry

Records with an affiliation

3,338,314

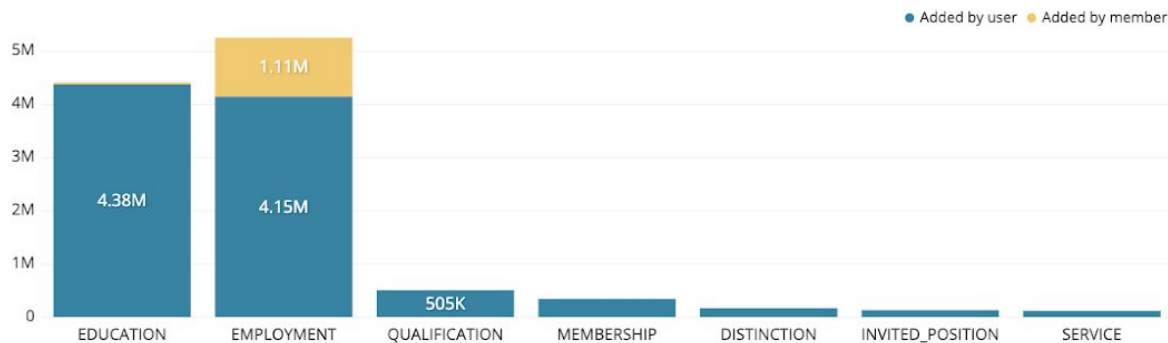
Number of affiliations

10,950,207

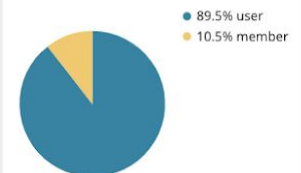
% Records with an affiliation

34.8%

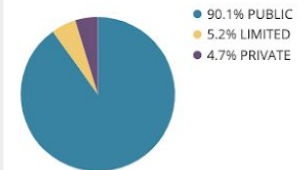
ORCID affiliation types



Affiliation source



Affiliation visibility



POLL

Service Providers Certification

“An ORCID SP is any organization that provides a product—free or paid—that includes functionality that can authenticate ORCID iDs and update ORCID records”

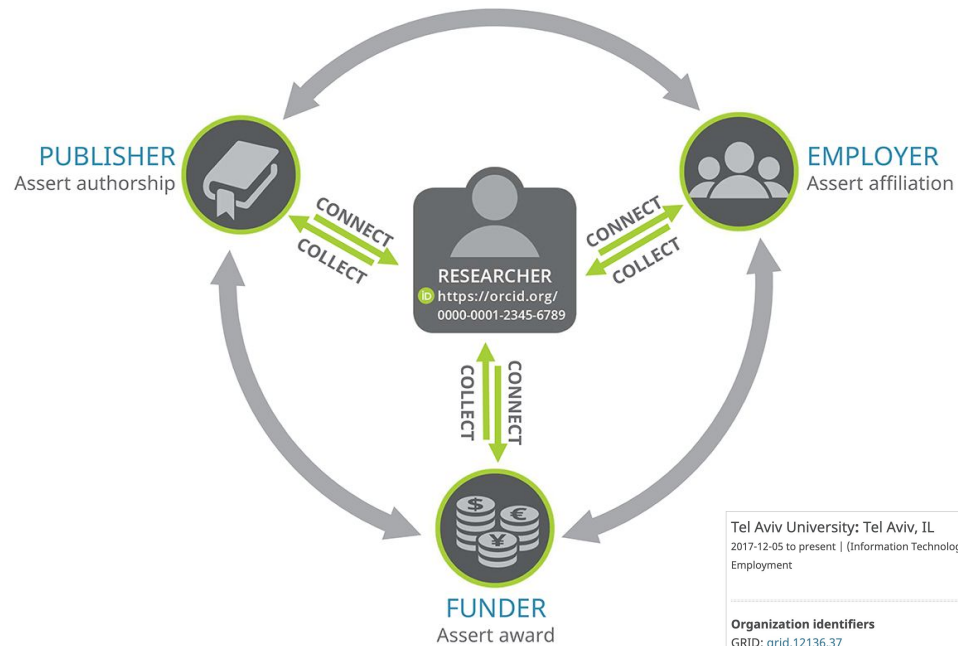


Certified organizations:

- [Altum](#)
- [DataCite](#)
- [Crossref](#)
- [Haplo](#)



INTEROPERABILITY ENTER ONCE REUSE OFTEN



Tel Aviv University: Tel Aviv, IL
2017-12-05 to present | (Information Technology and Computing Division)
Employment

Organization identifiers
GRID: [grid.12136.37](#)
Tel Aviv University: Tel Aviv, IL
<http://english.tau.ac.il/>
Other organization identifiers provided by GRID
FUNDREF: 501100004375 (preferred), 501100004237, 501100005310, 501100006099, 501100007539
ISNI: 0000 0004 1937 0546
ORGRID: 161402
ROR: <https://ror.org/04mhgzx49> (preferred)
WIKIDATA: Q319239 (preferred), Q56612885
WIKIPEDIA_URL: http://en.wikipedia.org/wiki/Tel_Aviv_University (preferred)

Added
2019-06-19

Last modified
2019-06-19

Source: Tel Aviv University ★ Preferred source



Source <https://orcid.org/0000-0001-8512-9281>

THANK YOU!



Find out more at <https://members.orcid.org>

Email g.mejias@orcid.org

Twitter [@gabioshka](https://twitter.com/gabioshka) / [@ORCID_Org](https://twitter.com/ORCID_Org)



ORCID integrations in HR systems

Dror Berger, IUCC

ORCID Webinar
September 3, 2020



Agenda

1. Introduction
2. The Israeli CRIS project
3. Overcoming language barriers using ORCID
4. The HR system as the most suitable host for ORCID interfaces and data
5. Different methods of implementation
6. Q & (Hopefully) A



Introduction - Context



- Dror
- Inter-University Computation Centre
- The academia in Israel
 - Israel is 2nd in the world for innovation out of 138 economies
 - 3rd for quality of research institutions
 - 1st for research talent in business
 - 25% of FDA-approved drugs developed by Israelis





The Israeli CRIS project - Objectives

- Combining data from the 9 Israeli universities and...
- Creating a single database and public portal for all Israeli research, to promote cooperation and knowledge dissemination
- Enabling uniform benchmarking
- Making the budgeting process, based on research outputs, transparent



The Israeli CRIS project - Research funding

In order to receive funding from the PBC, publications must be:

- Published in academic journals
- Peer reviewed
- Written in English, Hebrew or Arabic



The Israeli CRIS project - Requirements

- All universities use the same system, each using their own independent CRIS instance
- An aggregated environment will collect data from all instances
- Academic publications in Hebrew & Arabic included
- Academic outputs will be correctly assigned to organizational units



The Israeli CRIS project - challenges

- All examined systems automatically harvest data from databases such as Scopus and Web of Science, which mostly include publications in Roman alphabet.
- Matching algorithms are largely based on researchers' names
- Many names in Hebrew & Arabic have variations due to vowel representation



The Israeli CRIS project - Hebrew & Arabic



Wikimedia - Danny-w / CC BY (<https://creativecommons.org/licenses/by/3.0>)

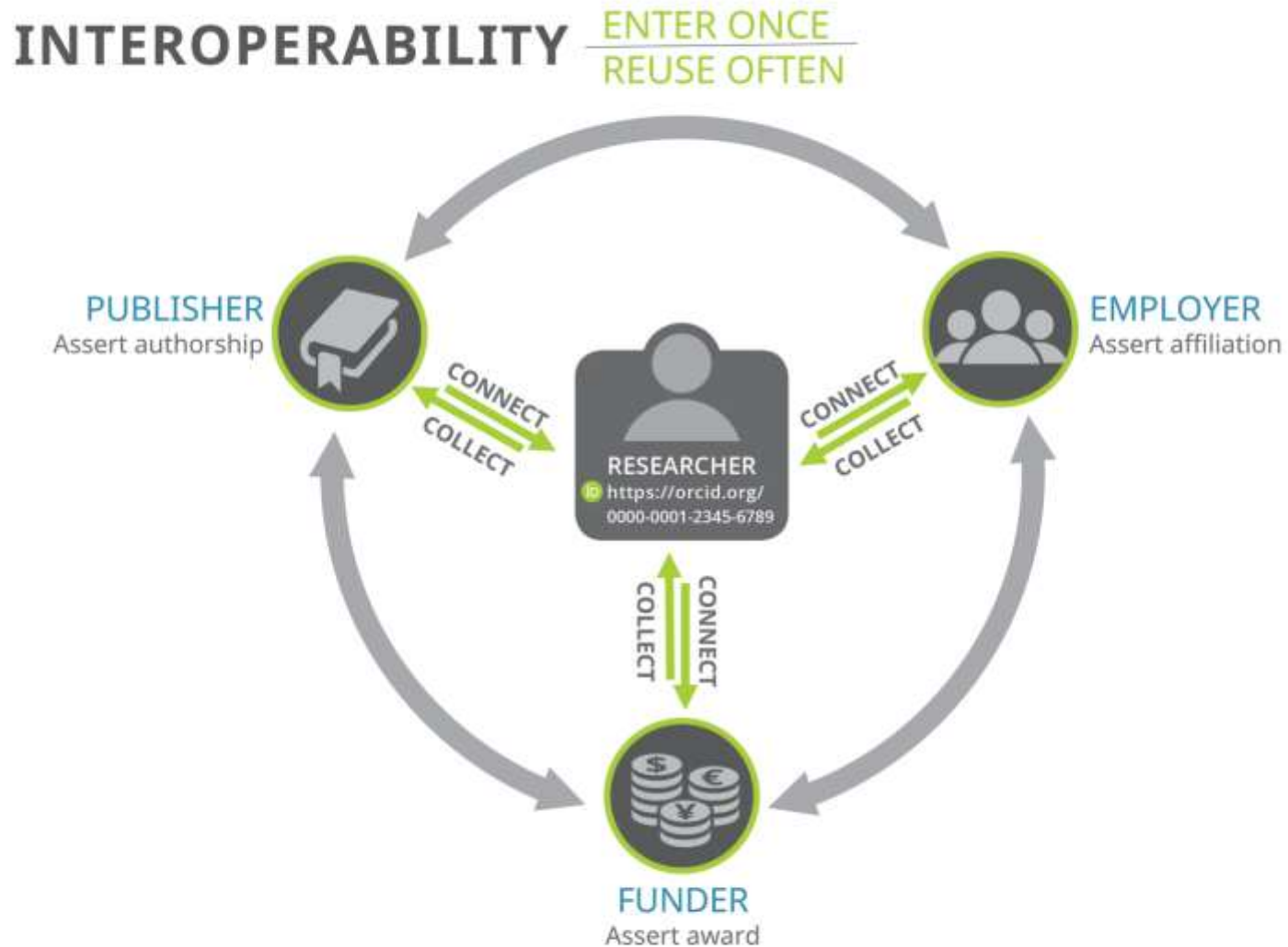


ORCID - The obvious answer

- "ORCID iD is the most widely used identification mechanism for researchers to assert online identity, eclipsing national identifiers and publisher author identifiers. In the Higher Education and Government sectors, ORCID has become a de facto standard." (Findings from the 2018 OECD International Survey of Scientific Authors)
- "For researchers, the ORCID identifier is becoming a widespread, de facto standard within the RIM ecosystem" (OCLC)



ORCID - Interoperability





Control No.	001	—	—	004546750
Date and Time	005	—	—	20190326191423.0
Fixed Data	008	—	—	100318^ ^acannaab ^^^^^^^^^^^^^^ ^^ ^^^d
LC Control No.	010	a	n	81010061
Other ID	024	7	a	0000-0002-1856-6964
		2		orcid
System No.	035	a	(HUI10)	000074937
Catalog Source	040	b	mul	
Sp. Code Dates	046	f	1939-06-22	
		2	edtf	
Personal Name	100	1	a	Yonath, Ada
		9	lat	
Personal Name	100	1	a	
		d		יונת, עדה,
		9		1939-
				heb
Assoc. Place	370	a	Jerusalem (Israel)	
Gender	375	a	female	
Associated Lang	377	a	eng	
Seel.Trac.Per.A	400	1	a	
		9		ליבשיץ, עדה
				heb
Seel.Trac.Per.A	400	1	a	Yonat, A.
		9	lat	
Seel.Trac.Per.A	400	1	a	Yonath, A.
		q	(Ada)	
		9	lat	
Nonpub.Gen.Note	667	a	Authority record added from HUI10.	
Sourc.Dat.Found	670	a	The Author's .תשכ"ד. 1964 פריהם, - סינטיים	
Sourc.Dat.Found	670	a	Structural aspects of recognition and assembly in biological macromolecules, 1981 (a.e.)	
		b	CIP t.p. (A. Yonath, Weizmann Institute) book t.p. (Ada Yonath)	
Sourc.Dat.Found	670	a		
		b		ויקיפדיה, נצפה 26 מרס 2019
				(עדה יונת לבית ליפשיץ נולדה ב-22 ביוני 1939 בשכונת גאולה בירושלים. היא ביוכימאית ישראלית, פרופסור מן המניין במכון ויצמן למדע, המתמחה בקריסטלוגרפיה של חלבונים. מחקרה עוסקים במבנהו ובפעולתו של הריבוזום. כלת פרס נובל לכימיה לשנת 2009 (במשותף עם ונקטרמן רמאקרישנן ותומאס סטייץ), "על מחקריהם שתרמו להבנת מבנה ותפקיד הריבוזום".
VIAF cluster	901	a	59149842003102842535	



ORCID in



Ada Yonath (Q7426)

Israeli crystallographer

edit

[In more languages](#) Configure

Language	Label	Description	Also known as
English	Ada Yonath	Israeli crystallographer	
Hebrew		עדה יונת	ביוכימאית ישראלית, כלת פרס נובל לכימיה
Arabic		عادا يوناث	عالمة كيمياء إسرائيلية
Russian	Йонат, Ада	No description defined	Ада Йонат

[All entered languages](#)

Statements

instance of	human edit
	1 reference
National Library of Israel ID	004546750 edit
	0 references
	+ add reference
	+ add value
ORCID ID	0000-0002-1856-6964 edit
	0 references
	+ add reference
	+ add value



ORCID in CRIS

- The comprehensive tender was awarded to Elsevier's Pure
- Pure now uses ORCID as a unique identifier for the researchers both in the individual instances and in the aggregated environment
- ORCID is used in Pure to find and retrieve research outputs



Interfaces with ORCID

- The main goal of the interface is the approval of the university as a trusted institution by the researcher, enabling reading and writing of relevant data.
- Permissions in ORCID are:
 - Granular, enabling an item level control
 - Can be modified or revoked at any time
- Written data can be, for example:
 - Employment affiliation (most common) for correctly affiliating a researcher with the university
- Read data can be, for example:
 - ORCID number (most common) for correctly assigning a researcher with its ID.



ORCID data characteristics

- ORCID data contains personal details:
 - ORCID iD
 - Authentication tokens
 - Biographical information
 - Others
- An organization may be granted access to more personal and private details as a “Trusted Party”



HR modules' characteristics

- Built and maintained using strict methods to provide both security and privacy
- Designed to store personal information
- A central part of the organization
- Integrated with many institutional systems (Research, Library, CMS etc...)



HR systems - The obvious place

Building ORCID integration from a core system stores the data in its “natural” place and will help disseminate it to local and remote systems



Infrastructure

Some universities in Israel use Oracle ERP as a core system, including Oracle's Human Resource Management System (HRMS)



Some universities in Israel use SAP as a core system, including SAP Human Capital Management (SAP HCM)





Oracle Integration - Architecture

Creating the interface directly from the HR:

ORACLE®

Oracle Application
Express (APEX)



ORCID

Researchers' records



Oracle Integration - Application

- The integration with ORCID is built as an integral part of the ERP, using Oracle Application Express (APEX):
 - Web-based software development environment that runs on an Oracle database
 - Used for building scalable, secure enterprise apps
 - Installed by default



Oracle integration - Database

- All relevant data is stored using the Extra Information Types (EIT) of the Oracle:
 - Descriptive Flexfields (DFF)
 - A flexfield is a flexible data field that the organization can customize to their business needs without programming.
 - Added security



- [illegible]



SAP Integration - Architecture

Creating an intermediate environment:





SAP Integration - Processes

Process includes:

- Obtaining personal data from SAP
 - This is not a direct interface with SAP, but files in a standard format sent via FTP to a directory on our server, for subsequent processing
- Building the interface application
- Storing data in a dedicated database
- Synchronization of changed data
 - Using Webhooks to know when the ORCID record was changed.



SAP Integration - Reporting

Using the dedicated database capabilities:

F8								
	A	B	C	D	E	F	G	H
1	first_name	last_name	email1	affiliation	orcidid	created_at	updated_at	
2	Eric	Cohen	Erik.Cohen@mail.huji.ac.il	Department of Sociology and Anthropology, Faculty of Social Sciences	0000-0002	18/12/2018 8:39	18/12/2018 8:39	
3	Robin	Rosenbaum	Robin.Rosenbaum@mail.huji.ac.il	The Paul Baerwald School of Social Work and Social Welfare	0000-0002	18/12/2018 8:28	18/12/2018 8:28	
4								



SAP Integration – Responsive screens

Galaxy S5 ▼ 360 x 640 75% ▼ Online ▼

Pixel 2 XL ▼ 411 x 823 89% ▼ Online ▼

Pixel 2 XL ▼ 411 x 823 89% ▼ Online ▼

Please sign in with huji mail and password

Email address

Password

Sign in

Please click the button below to connect to your ORCID account, or register if you do not have an account. After connecting, you will get an authorization window to confirm that you give the Hebrew University of Jerusalem access to your ORCID record. Thank you for your cooperation! [Prof Sivan text here]

The following information will be updated to your ORCID account from your huji personal information record:

First name: Edna-Adi

Last name: Michan

Email: adimich@savion.huji.ac.il

Affiliations: , The Authority for Computati

Register or Connect your ORCID iD

Edna-Adi Michan

About Orcid:

ORCID is an independent non-profit organization that provides a persistent identifier – an ORCID iD – that distinguishes you from other researchers and a mechanism for linking your research outputs and activities to your iD. ORCID is integrated into many systems used by publishers, funders, institutions, and other research-related services. Learn more at orcid.org.

By sharing your iD with The Hebrew University of Jerusalem, and giving us permission to read and update your ORCID record, you enable us to help you keep your record up-to-date with trusted information. Learn more in Six ways to make your ORCID iD work for you!



Questions?

Dror Berger

dror@iucc.ac.il

