

ORCID FOR RESEARCH INSTITUTIONS: SOUTH ASIA

24 February 2021 | ORCID Webinar

BRIAN MINIHAN ENGAGEMENT LEAD, OCEANIA, HONG KONG & SOUTH ASIA



<https://orcid.org/0000-0001-8412-717X>

b.minihan@orcid.org



Connecting Research
and Researchers



@MinihanBrian
@ORCID_Org

ORCID.org

ORCID's Vision

ORCID's vision is a world in which all who participate in research, scholarship, and innovation are uniquely identified and connected to their contributions and affiliations across disciplines, borders, and time.

What is ORCID?

- ✓ ORCID is an open, not-for-profit organization that serves the research community by collaborating and innovating with organizations like yours
- ✓ We provide researchers with a unique identifier, an ORCID iD, that reliably and clearly connects them with research contributions and affiliations
- ✓ Thousands of organizations have now integrated ORCID iDs – from grant application and manuscript submission to CRIS and other research information management systems, and more!

ORCID provides



Persistent digital identifiers to distinguish researchers from each other



Member-built integrations for automated links between researchers and their activities/affiliations



A hub for machine-readable connections between identifiers for organizations, funding, outputs, and people

AGENDA

- Benefits of an ORCID ID for a researcher
- What ORCID does for institutions
- national strategies for ORCID through consortium model
- Q & A

FOR MORE IN DEPTH ON ORCID AS RESEARCH INFRASTRUCTURE

Meadows, A., L. Haak, L., & Brown, J. (2019). Persistent identifiers: the building blocks of the research information infrastructure. *Insights*, 32(1), 9. DOI: <http://doi.org/10.1629/uksg.457>

ORCID and Researchers

Benefits: Why should researchers care about ORCID?



WHY IS THERE A PROBLEM?

Prior to ORCID, the research community lacked the ability to link researchers and scholars with their professional activities.

Name variations:

- Wu Xiaoxin, Wu X. 吳小新

Institutional variations:

- Ricci Institute, Ricci Institute for Chinese-Western Cultural History, University of San Francisco, Ricci Institute, 利瑪竇中西文化歷史研究所, 舊金山大學利瑪竇研究所

WHY PERSISTENT IDs?

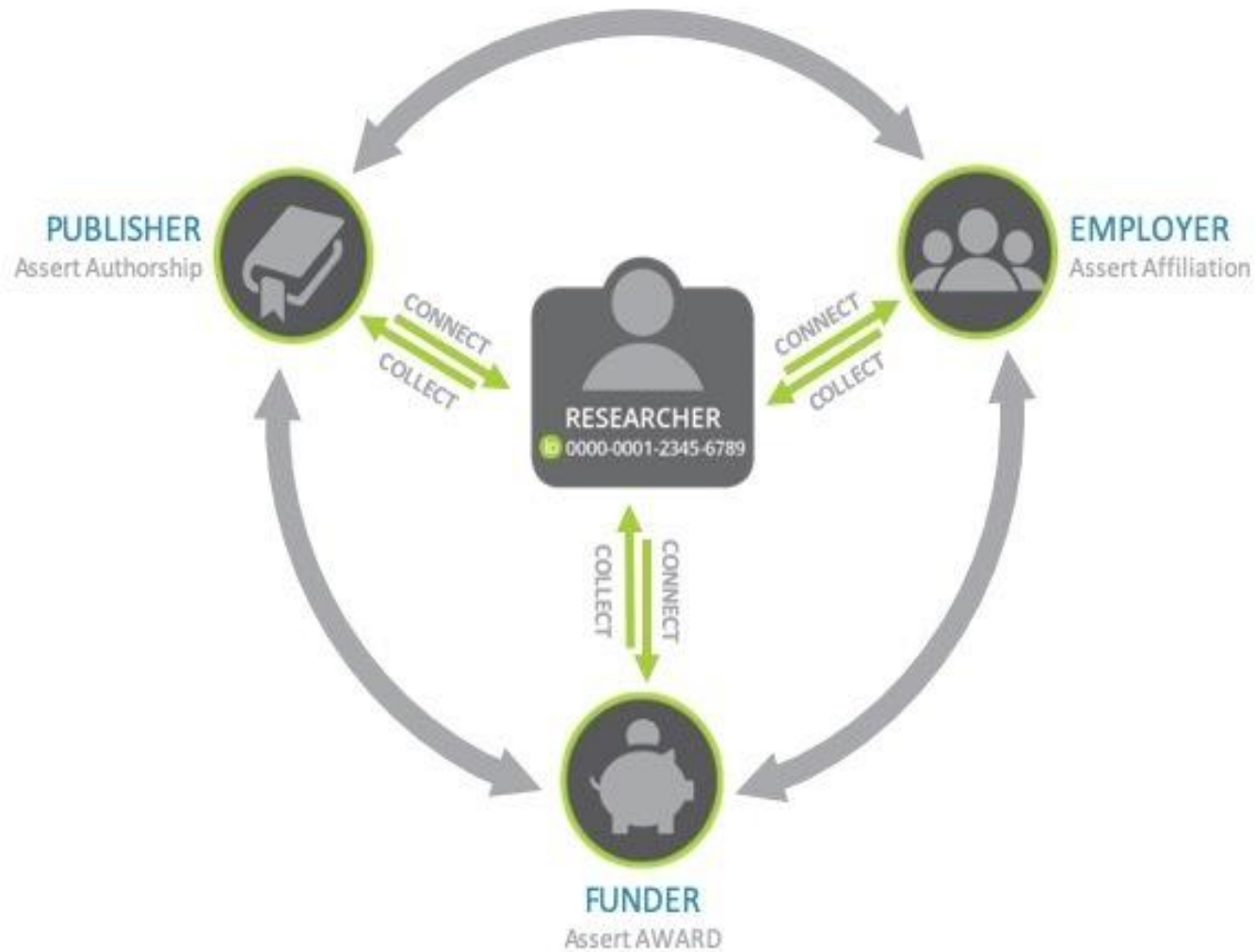
Challenges for the **individual**:

- Multiple profile systems
- Manual data entry
- Administrative burden
- No control of personal data
- Name ambiguity
- Recognition/credit



Challenges for the **organisations**:

- Name ambiguity
- Trust in metadata
- Reporting latency
- Silo systems
- Return on investment
- Discoverability



INTEROPERABILITY

THE ORCID REGISTRY: A SNAPSHOT

- 10,781,762 ORCID Records (IDs)
- an average of 20-40,000 created per week
- 68,699,409 works
- 987,561 funding items
- 3,647,887 peer review items
- 4,851,881 education affiliations
- 4,873,319 employment affiliations
- 1178 member institutions (23 national Consortia)
- 8 member institutions using DSpace-CRIS

ORCID and Research Institutions

Benefits: Why should institutions care about ORCID membership?



Organization/member benefits

1. Reduce/eliminate need for researcher disambiguation within and between systems
2. Enable automatic system-to-system updates for researcher reporting
3. Validate your researchers' affiliation, awards, or works – building trust in the overall research infrastructure
4. Improve speed and accuracy of research reporting
5. Maintain connections with researchers despite name/affiliation changes
6. Help your researchers comply with funders and publishers requiring ORCID
7. Learn from other organizations' experiences and share your own
8. Be eligible for public recognition of good ORCID integrations
9. Get involved and help shape ORCID's future priorities and goals
10. Play your part in making the Internet work better



CAREER TRACKING

BY YOUR INSTITUTE

- PhD graduates
- Post docs
- Faculty at your institute

RELIABLE CONNECTIONS

Your institution's research information in a reliable trusted format

Timely reliable research information simplifies reporting



RESEARCH COMMUNITY DATA WITH CONSENT

Researchers' consent to update their data
means more activity

Strengthen trust and confidence by sharing
through ORCID's permission model activity



ORCID REGISTRY CONNECTIONS

Two models:

1. Connect via a vendor system
 - Manuscript submission/publication
 - Document/data repositories
 - Profile systems
 - CRIS systems
2. Develop a custom connection





GETTING STARTED (1)

Who are the right people to involve?

- Library, IT, Research Office, HR, others

Where does ORCID fit into your existing systems and workflows?

- Sign in – why not link your researchers' iDs?
- Account settings/user profile
- faculty review
- ETD submission
- conference registration (have)
- journal/paper review submission
- data repository submissions
- resources use application
- funding requests

Are you already using any of the vendor systems that support ORCID?



See-ming Lee (2013),
<https://flic.kr/p/eL9p79>



GETTING STARTED (2)

What information do you want to get from your researchers' ORCID records?

What information can you add to their ORCID records?

- Asserting affiliations

Where will you display the ORCID iDs?

Do you want information in your system(s) and ORCID to be synchronized?

Would you like to enable institutional sign-in?



GETTING STARTED (3)

Whose ORCID iDs will you be collecting (faculty, students, staff, others)?

How will you communicate with your researchers about ORCID and what will you tell them about your integration?

How many of your researchers already have an iD?



See-ming Lee (2013),
<https://flic.kr/p/eL9p79>

ORCID and South Asia

A comparison between researchers, research institutions globally through the ORCID registry

SOUTH ASIA RESEARCHERS IN ORCID

INDIA :	4th globally
PAKISTAN:	30th globally
BANGLADESH:	48th globally
SRI LANKA:	68th globally

ORCID in South Asia

- ORCID records with academic emails in India: 131,906
 - Pakistan: 17,841
 - Bangladesh: 5501
 - Sri Lanka: 3616
-
- Member institutions: IIT Bombay

ORCID in South Asia

Top institutions affiliations in ORCID registry

- India: IIT Kharagpur [1600]
- Pakistan: University of the Punjab [535]
- Bangladesh: University of Rajshahi [405]
- Sri Lanka: University of Colombo [467]

ORCID and Consortia

ORCID's model is a community of practice approach to scale globally and incorporate local communities to support research through ORCID



BENEFITS OF ORCID: CONSORTIUM MEMBERS

1. Premium member benefits at a lower cost
2. Stronger collaboration between organizations within your consortium
3. Opportunities for members to interact with and learn from other ORCID consortia globally
4. Participation in local/national/regional communities of practice
5. Dedicated local community support provided by the consortium lead organization
6. ORCID support including documentation, review of integrations, resolution of complex technical issues
7. Central communication hub for members
8. Customized, high-impact communications and promotion
9. Online and in-person events for consortium members
10. Administrative support from the consortium lead organization



CONSORTIA LEAD ORGANIZATIONS

- Provide administrative support to your consortium
- Manage and support member onboarding
- Employ dedicated support and engagement staff
- Develop shared resources, communication materials and events
- Maintain consortium document repository
- Support translation of ORCID member pages / Registry user interface into your region's language(s)
- Work with community to identify goals, develop policy and governance, and establish regular progress reporting to members and ORCID

ORCID CONSORTIA LEAD ORGANIZATION TYPES VARY

- National Identity Management Providers



similar to

<https://pern.edu.pk/>

- National Information Infrastructure Organizations



similar to

<https://inlibnet.ac.in/>



COMMUNITY LEAD RESPONSIBILITIES

Working with ORCID:

- Provide public consortium contact details for ORCID consortium page
- Join ORCID API User Group, require member tech leads to do so
- Join ORCID's consortia lead community forum
- Maintain contact information for lead and members & train members in consortia self service platform
- Meet with ORCID team quarterly



An abstract graphic on the left side of the slide featuring a network of green dots connected by thin green lines, set against a dark grey background.

ORCID

RESPONSIBILITIES

- Clearly communicate ORCID's vision and mission
- Facilitate communications between consortia/consortia lead organizations
- Deliver training and ongoing support for community lead/consortia lead organization
- Provide customizable resources for consortia/consortia members
- Act as escalation point for complex technical/support issues



Australia Consortium

42 members

40 research institutions

2 funding agencies

Milestones

pilot testing
organisation for new
ORCID software

numerous surveys of
ORCID use

Roadmap

measure level of maturity in
ORCID connections among
member institutions



<https://aaf.edu.au/>

New Zealand Consortium

52 members



EXPLORE | DISCOVER | SHARE

universities, regional health boards, polytechnic institutes

2 funding agencies

Milestones

developed certified tool to connect to ORCID

National strategy includes ORCID

Roadmap

engaging with small institutes to connect their researchers via their tool, the NZ ORCID Hub

Developing NZ CRIS system



<https://www.royalsociety.org.nz/>

ORCID DOCUMENTATION

Non Technical

- General information for research organizations:
<https://info.orcid.org/orcid-for-research-organizations/>
- Best practices for research organization integrations:
<https://info.orcid.org/documentation/workflows/>
- Certified systems to connect to ORCID for research organizations:
<https://info.orcid.org/orcid-certified-service-providers-list/>

THANK YOU!



Brian Minihan

Engagement Lead, Oceania, Hong Kong & South Asia

<https://orcid.org/0000-0001-8412-717X>

Questions?

b.minihan@orcid.org

